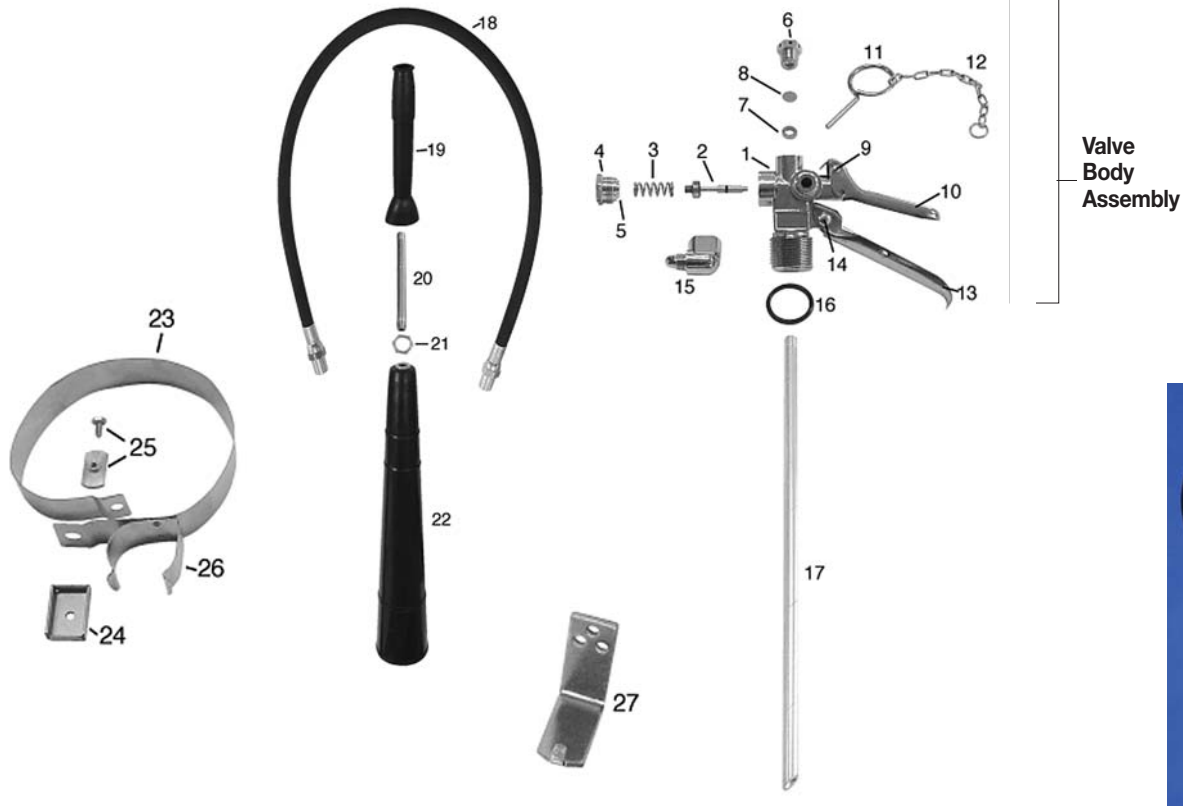


Valve Assembly Parts for 10, 15 and 20 lb. CO₂ Extinguishers



PARTS for Fire Extinguisher

Model. #	Part Name	Models Used On	✓
Valve Assembly Parts 10 lb., 15 lb and 20 lb. CO₂			
31151	Valve Body Assembly (1) <i>includes all parts: 2 through 16</i>	10, 15, and 20 lb CO ₂	
31132	Stem Assembly (2)	10, 15, and 20 lb CO ₂	
31142	Spring (3)	10, 15, and 20 lb CO ₂	
31143	Spring Retainer Nut (4) <i>includes Washer (5)</i>	10, 15, and 20 lb CO ₂	
31145	Safety Cap Assembly (6) <i>includes Washer (7) and Disk (8)</i>	10, 15, and 20 lb CO ₂	
31138	Top Lever Rivet (9) <i>Stainless Steel</i>	10, 15, and 20 lb CO ₂	
31152	Top Lever (10) <i>Stainless Steel</i>	10, 15, and 20 lb CO ₂	
31153	Pull Pin (11) <i>Stainless Steel</i>	10, 15, and 20 lb CO ₂	
31135	Chain (12) <i>Stainless Steel</i>	10, 15, and 20 lb CO ₂	
31148	Carry Handle (13) <i>Stainless Steel</i>	10, 15, and 20 lb CO ₂	
31148	Carry Handle Nut and Bolt (14) <i>Stainless Steel</i>	10, 15, and 20 lb CO ₂	
31146	Elbow (15)	10, 15, and 20 lb CO ₂	
20217	O-Ring - Valve Body (16)	10, 15, and 20 lb CO ₂	
10-ST	Syphon Tube 10 lb. (17)	10 lb CO ₂	
1520-ST	Syphon Tube 15 and 20 lb. (17)	15, and 20 lb CO ₂	
36-A	Hose (18)	10, 15, and 20 lb CO ₂	
21204	Rubber Grip (19)	10, 15, and 20 lb CO ₂	
21202	CO ₂ Horn 6" Discharge Pipe Nipple (20)	10, 15, and 20 lb CO ₂	
21273	Horn Diffuser Lock Nut (21)	10, 15, and 20 lb CO ₂	
21251	Horn - 10 lb. (22)	10 lb CO ₂	
21271	Horn 15 and 20 lb. (22)	15, and 20 lb CO ₂	
1015-BD	Band Assembly 10 and 15 lb (23) <i>includes Horn Holder Clip (26)</i>	10 and 15 lb CO ₂	
20-BD	Band Assembly 20 lb (23) <i>includes Horn Holder Clip (26)</i>	10, 15, and 20 lb CO ₂	
10031	Band Housing (24)	10, 15, and 20 lb CO ₂	
20111	Band Retainer Nut and Bolt (25)	10, 15, and 20 lb CO ₂	
1015-WH	Wall Hook 10 and 15 lb. (27)	10 and 15 lb CO ₂	
20-WH	Wall Hook 20 lb. (27)	20 lb CO ₂	